



INFO SHEET

Printer software tool

## PRINTSIGHT SOFTWARE

Capture your printer data in real time to make informed decisions.

How do you take the guesswork out of determining if you are charging your customers enough for their projects?

Increase visibility and increase profitability with PrintSight software; designed to provide print-for-pay businesses an effective tool to monitor their Arizona, Colorado and ColorWave printers.



SMART CHANGE STARTS HERE.

The PrintSight software enables print-for-pay business owners or their production staff to closely monitor many important aspects of their Arizona, Colorado or ColorWave printer fleet from anywhere on their network. PrintSight displays a range of data in an intuitive user interface allowing for real time reporting of ink/toner usage, media type printed, square footage, print time, machine status and more.

## Instantly Calculate Cost Per Job

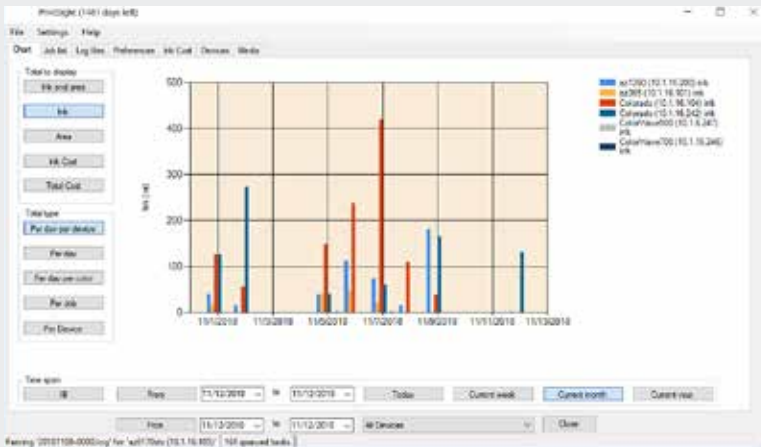
PrintSight takes the guesswork out of knowing key details such as if you are charging enough on a particular job or determining which machines are under or over utilized. You can see which media was printed and how many square feet were used, helping you determine when you need to re-order more. See how long an image took to print to better determine your production schedules and determine which printers still have capacity should your print volumes increase. With the ability to enter your ink cost per liter/ bottle and media cost, PrintSight can instantly calculate the cost of the job.

Combined with the award-winning Arizona printers, PrintSight makes for a valuable addition to print shops interested in quickly and easily understanding key operational metrics in their production environment.

As a print shop owner, PrintSight gives you the detail you need to make informed decisions allowing you to better utilize your printers and maximize your profitability while maintaining competitive pricing.

## Easy to Deploy

PrintSight is connected to your Arizona, Colorado and/ or ColorWave printers via your Ethernet network. You can quickly identify your printer by name, IP address and even see their individual serial numbers and current status. PrintSight software can be installed on one or more connected PC's so all internal stakeholders can readily see the data that's most important to them.



### MAIN VIEW

On the Main View screen you can see all of your recent activity on currently installed devices. You have the ability to filter by date and device so you can quickly see how much was printed during a particular timeframe.

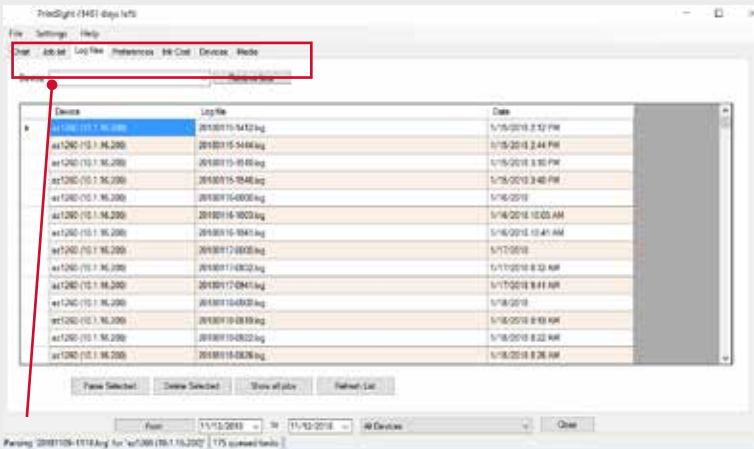
### JOB VIEW

On the Job View screen you can see detailed information on each job. It can also be customized to display data for ink/toner usage, square footage, cost, print time and utilization. This information can be exported as a CSV file containing all the job data.

The screenshot shows a 'Report types' configuration window. It has a title bar with a minus sign, a maximize button, and a close button. The window is divided into several sections:
 

- Device granularity:** Contains two radio buttons: 'Per device' (which is selected) and 'All devices'.
- Time period:** Contains two radio buttons: 'Per month' (which is selected) and 'Whole period'.
- Data to include:** A list of checkboxes: 'Ink' (checked), 'Square Footage' (unchecked), 'Cost' (unchecked), 'Printing time' (unchecked), and 'Utilization' (unchecked).

 At the bottom right of the window is a blue button labeled 'Create report'.

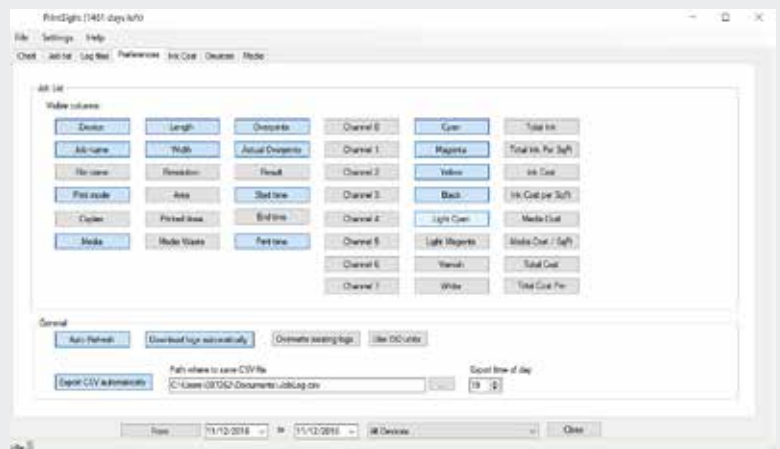


### LOG FILES VIEW

The Log Files View allows you to connect to networked devices so you can then retrieve their data logs. You can also sort the logs by date so you can ensure you are getting the most up to date information.

### PREFERENCES VIEW

Customize what columns to display in the Job View. You also have the ability to enable an Auto Refresh of log data so it updates every 2 minutes as well as export it automatically at a set interval.



# WHY CANON SOLUTIONS AMERICA.

Canon Solutions America recommends forward-thinking strategies to achieve the highest levels of information management efficiency for your unique business needs. Using superior technology and innovative services, we then design, implement, and track solutions that improve information flow throughout your organization while considering the environment, helping to result in greater productivity and reduced costs.

## There are many reasons why you should choose Canon Solutions America as your provider for document management solutions. Benefits include:

- A Canon U.S.A. Company
- Business Services
- Professional Services
- Global Capabilities
- Certified Training and Support
- Flexible Finance Options
- Single-Source Solutions Provider
- Managed Document Services
- Nationwide Coverage
- Customized Industry Solutions
- Genuine Canon and Océ Parts and Supplies
- Diverse Range of Input-to-Output Technology

But that's not all. As a company that is dedicated to your needs, we support our solutions with highly skilled professionals and advanced diagnostic systems to maintain peak performance. And with ongoing consultation, we can further your document management capabilities to ensure the highest level of satisfaction and productivity.

**Canon**

CANON SOLUTIONS AMERICA

### Large Format Solutions

100 Park Blvd., Itasca, IL 60143

1-800-842-4534 | 1-630-250-6550  
[us.info@csa.canon.com](mailto:us.info@csa.canon.com) [CSA.CANON.COM](http://CSA.CANON.COM)