

CANON TRUE PROOF

Perfect proofing solution for production printing

SMART CHANGE STARTS HERE.

WHAT YOU SEE IS WHAT YOU GET AND EVEN MORE ...

True Proof can help you:

- Reduce turnaround time
- Reduce proofing costs
- Gain efficiency in full color
- Maximize flexibility



TRUE PROOF

Perfect proofing solution for production printing

True Proof for precise prepress proofing

With the increasing demand for full color in almost every kind of application, from statements to direct mailings and brochures, today's applications are becoming more complex. For print service providers, a high-volume digital proofing solution ensures that any mistakes made during the file preparation process are discovered prior to production, while assuring the print buyer that they will receive the printed product they are expecting.

True Proof is a WYSIWYG software proofing tool that acts like a virtual high-volume production printer, enhancing and streamlining your prepress proofing. Empowering you to preview your page images and check registration accuracy—with pixel detail if necessary—before your digital printing jobs enter production.

True Proof shortens the time for generating and approving new applications, helping save you costs related to set-up, down-times, consumables, labor, and time to produce proofs on a production printer.

True Proof Key Features:

- Virtual simulation of Canon production printers (VarioStream 4000, VarioStream 7170, ColorStream 3000Z, 6000 and Classic, ProStream 1000, JetStream 4300 and 5500 series).
- Ensure the integrity of data and resources through simulation of the entire print workflow (including RIP).
- A precise view of your applications with pixel exact soft proofing.
- Verify registration accuracy of recto/verso printing with semi-transparent viewing.
- Check the position of your pages precisely – with crosshair settings.
- Simulation of duplex pages or superimposing of preprinted forms.
- Accelerate approval times by generating and emailing PDF file of proofed pages.
- Determine color coverage and calculate ink usage estimates.
- Improve coverage and ink calculation when combined with Canon PRISMA production InkControl.
- Support virtual environments (based on ESXi V5).

Reduce turnaround time

Streamline your prepress design and approval process using True Proof. Providing an accurate presentation of layout and registration of pages prior to production will boost the performance and utilization of production equipment for accelerated turnaround times.

Allow print buyers to review their proof without waiting for a printout. Generate and email a PDF file of the proof pages for a quicker sign-off. Digital proofs allow for flexibility for both simultaneous and consecutive approvals.

Reduce your proofing costs

An industry-unique highlight of True Proof is the implementation of the original CanonSRA® printer controller software. This enables precise proofing of any kind of application, no matter if full color, monochrome, or even Canon CustomTone®. You can view your pages with True Proof while also checking for registration accuracy of recto/verso images and, if necessary, simulating pre-printed forms on screen.

Due to its unique design, True Proof virtually simulates the complete print workflow—ensuring the integrity of your data and application resources. True Proof is a smart and efficient alternative to help reduce your proofing costs.

Customers can easily verify:

- Correctness of content
- Correctness of imposition and layout
- Mock-up accuracy

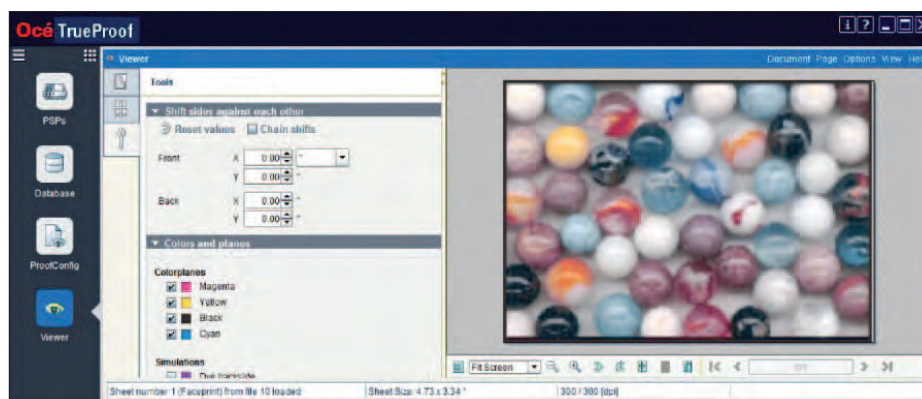
Gain efficiency in full color

True Proof can be used to determine color coverage of applications, which is an important parameter in calculating ink usage and costs. In order to account for color matching and proofing, True Proof uses unique counting capabilities to count every pixel on a processed page, and at the end of the job generates coverage values for each color in the entire job. Compare these ink estimations against PRISMAproduction InkControl actual ink coverage and effective production device ink measurement for variances to fine-tune job estimates.

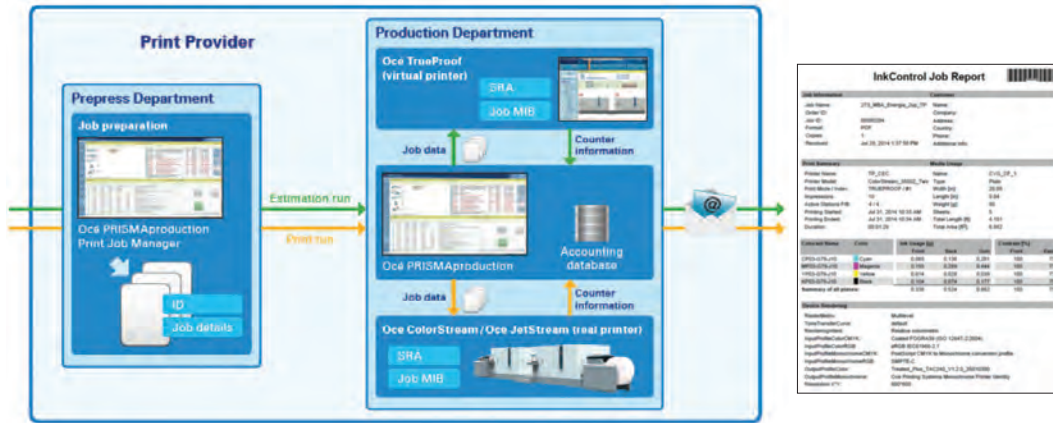
Estimation prior to running the production job

By running print jobs through True Proof with similar settings as used later on during the production, InkControl calculates the estimated ink usage based on the pixels and droplet sizes. The result is then stored inside the PRISMAproduction Accounting Database for further processing.

- Ink estimations facilitate accurate pre-calculations for quotations.
- Analysis of historical data on ink usages simplifies cost and ink usage overhead analysis.
- All information at hand to do a comparison on pre- and post-print calculations to further improve the quality of the ink usage quotation.
- Helps limit the risk of underestimating ink costs.



True Proof proofing a full color application



True Proof in combination with PRISMAproduction allows for job estimation of ink consumption even before the actual job run. A detailed report will provide accurate information about the ink consumption and the specific job setting.

The perfect combination – True Proof and PRISMAproduction

Combine True Proof with PRISMAproduction to better address incoming data formats and attract new customers. PRISMAproduction accepts all major data formats, including AFP, LCDS, line data, PDF, Adobe PostScript, TIFF, VIPP, and PCL. Let True Proof act as a virtual printer, providing prepress proofing capabilities for all of these very different data formats.

Replace your preprinted forms with PRISMAproduction and True Proof. Run variable, full-color statements on plain paper—in one easy process. It's simple to eliminate preprinted shells with the PrePrinted Forms Replacement Module in PRISMAproduction. Not only can you streamline your workflow, but you'll also save on labor and inventory

costs. Best of all, you don't have to change your existing applications in any way. Use True Proof to verify variable data alignment within the electronic form overlay for perfect registration.

- Save time, money, and labor with the switch from preprinted rolls or sheets to blank white paper.
- Reduce forms inventory costs and minimize overhead.
- Gain greater flexibility with forms design.
- Quickly change forms as needed (no obsolescence or waste).
- Transition from sheet-fed to roll-fed production without having to change your existing applications.

True Proof ensures what you see is what you get, and even more.

Visit our Production Print Resource Center at: csa.canon.com/ProductionPrint

Canon

CANON SOLUTIONS AMERICA

877-623-4969 CSA.CANON.COM